

TEST REPORT

Product: 3in1 Magnet keychain usb cable

Brand Mark:

Applicant:

Address:

Manufacturer:

Address:

Model No: 3in1 magnetic usb cable, magnetic usb cable for iphone & micro & type c

Date of Sample Received: 2018-03-19

Testing Period: 2018-03-19 to 2018-03-21

Test Requested:

Conclusion:

(1): As specified by client, to determine the Lead(Pb), Cadmium(Cd), Mercury(Hg), Hexavalent Chromium(Cr6+), Polybrominated Biphenyls(PBBs) & Polybrominated Diphenyl Ethers(PBDEs) content in the submitted sample in accordance with Regulation Pass

(2): As specified by client, to determine the HBCDD content in the submitted samples Pass

(3): As specified by client, to determine the DEHP, DBP, BBP content in the submitted Pass

The results shown on the report comply with the limit in commission decision amending Directive 2011/65/EU (ROHS).

Check by : Si feifei Date : 2018-03-23

(Si feifei)

Approved by : Xu Peng Date : 2018-03-23

(Xu Peng)



Shenzhen ATL Testing Technology Co., Ltd.

Address: Floor 1, Xuyuan Vice-building, No. 2107, Bixin Road, Nanlian Community, Longgang Street, Longgang District, Shenzhen City

Tel: (86)-755-26909822 Fax: (86)-0755-61605504 Http:// www.atllab.org

Test Method:

(1) With reference to IEC 62321.

Testing item	Pretreatment method	Measuring instrument	MDL
Lead(Pb)	IEC 62321:2013	ICP-OES	2 mg/kg
Cadmium(Cd)	IEC 62321:2013	ICP-OES	2 mg/kg
Mercury(Hg)	IEC 62321:2013	ICP-OES	2 mg/kg
Chromium(Cr VI)	IEC 62321:2008	UV-Vis	2 mg/kg
PBBs/ PBDEs	IEC 62321:2008	GC-MS	5 mg/kg

(2) With reference to EPA 3550C:2007

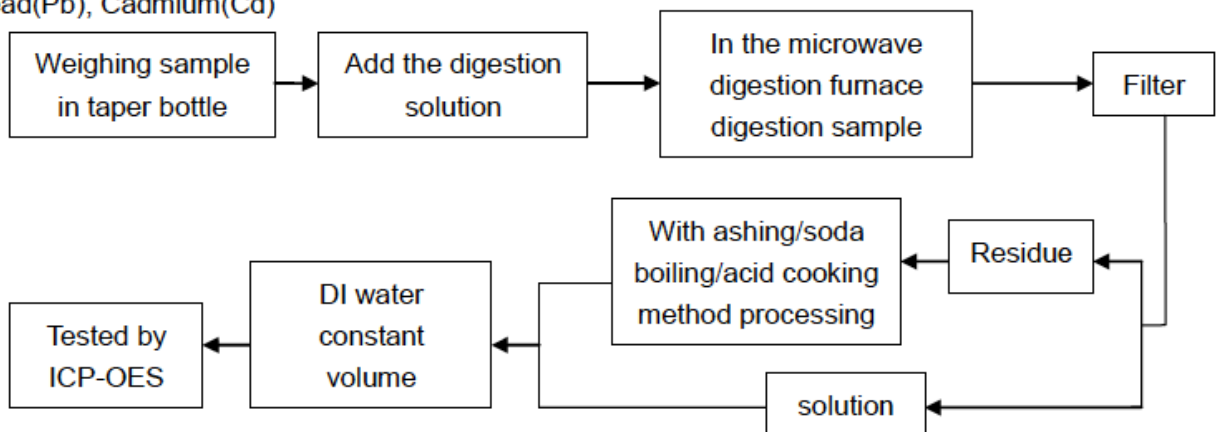
Testing item	Pretreatment method	Measuring instrument	MDL
HBCDD	EPA 3550C:2007	GC-MS	10 mg/kg

(3) With reference to EN 14372:2004

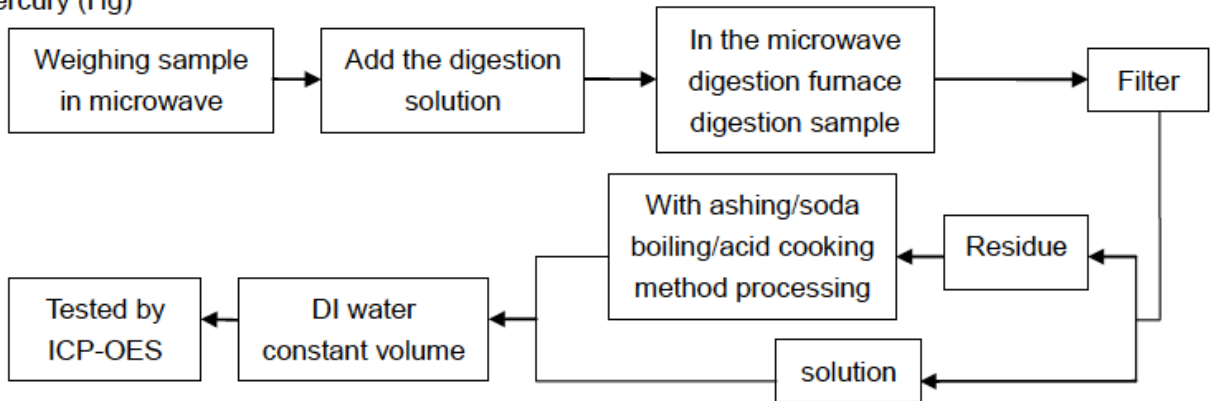
Testing item	Pretreatment method	Measuring instrument	MDL
DEHP, DBP, BBP	EN 14372:2004	GC-MS	0.003 mg/kg

Test Flow:

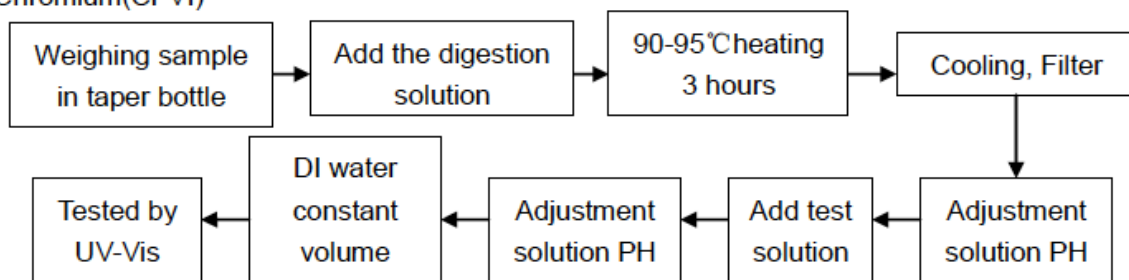
1. Lead(Pb), Cadmium(Cd)



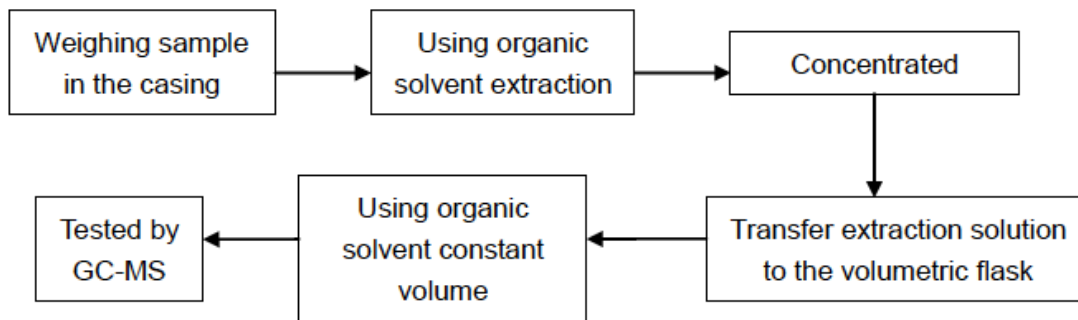
2. Mercury (Hg)



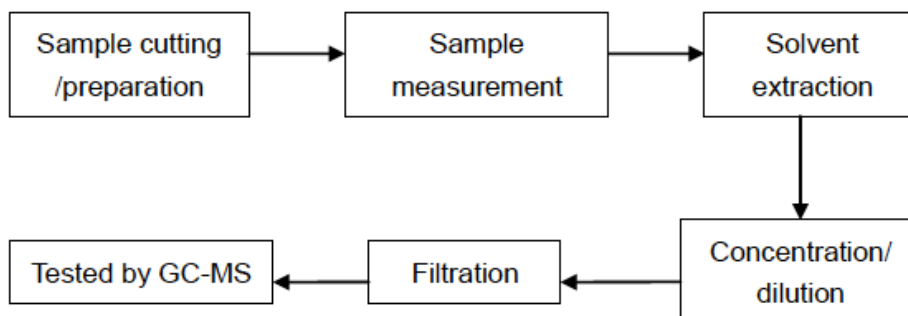
3. Chromium(Cr VI)



4. PBBs/ PBDEs



5. HBCDD/ DEHP/ BBP/ DBP



Test Results:

Shenzhen ATL Testing Technology Co., Ltd.

Address: Floor 1, Xuyuan Vice-building, No. 2107, Bixin Road, Nanlian Community, Longgang Street, Longgang District, Shenzhen City

Tel: (86)-755-26909822 Fax: (86)-0755-61605504 Http:// www.atllab.org



ROHS TEST REPORT
Report No.: ATL20180319162R

Testing Item	Unit	ROHS Limit	Result					
			1	2	3	4	5	6
Lead(Pb)	mg/kg	1000	N.D.	N.D.	N.D.	N.D.	N.D.	N.D.
Cadmium(Cd)	mg/kg	100	N.D.	N.D.	N.D.	N.D.	N.D.	N.D.
Mercury(Hg)	mg/kg	1000	N.D.	N.D.	N.D.	N.D.	N.D.	N.D.
Chromium(Cr VI)	mg/kg	1000	N.D.	N.D.	N.D.	N.D.	N.D.	N.D.
Sum of PBBs	mg/kg	1000	N.D.	N.D.	N.D.	N.D.	N.D.	N.D.
Monobromobiphenyl	mg/kg	/	N.D.	N.D.	N.D.	N.D.	N.D.	N.D.
Dibromobiphenyl	mg/kg	/	N.D.	N.D.	N.D.	N.D.	N.D.	N.D.
Tribromobiphenyl	mg/kg	/	N.D.	N.D.	N.D.	N.D.	N.D.	N.D.
Tetrabromobiphenyl	mg/kg	/	N.D.	N.D.	N.D.	N.D.	N.D.	N.D.
Pentabromobiphenyl	mg/kg	/	N.D.	N.D.	N.D.	N.D.	N.D.	N.D.
Hexabromobiphenyl	mg/kg	/	N.D.	N.D.	N.D.	N.D.	N.D.	N.D.
Heptabromobiphenyl	mg/kg	/	N.D.	N.D.	N.D.	N.D.	N.D.	N.D.
Octabromobiphenyl	mg/kg	/	N.D.	N.D.	N.D.	N.D.	N.D.	N.D.
Nonabromobiphenyl	mg/kg	/	N.D.	N.D.	N.D.	N.D.	N.D.	N.D.
Decabromobiphenyl	mg/kg	/	N.D.	N.D.	N.D.	N.D.	N.D.	N.D.
Sum of PBDEs	mg/kg	1000	N.D.	N.D.	N.D.	N.D.	N.D.	N.D.
Monobromodiphenyl ether	mg/kg	/	N.D.	N.D.	N.D.	N.D.	N.D.	N.D.
Dibromodiphenyl ether	mg/kg	/	N.D.	N.D.	N.D.	N.D.	N.D.	N.D.
Tribromodiphenyl ether	mg/kg	/	N.D.	N.D.	N.D.	N.D.	N.D.	N.D.
Tetrabromodiphenyl ether	mg/kg	/	N.D.	N.D.	N.D.	N.D.	N.D.	N.D.
Pentabromodiphenyl ether	mg/kg	/	N.D.	N.D.	N.D.	N.D.	N.D.	N.D.
Hexabromodiphenyl ether	mg/kg	/	N.D.	N.D.	N.D.	N.D.	N.D.	N.D.
Heptabromodiphenyl ether	mg/kg	/	N.D.	N.D.	N.D.	N.D.	N.D.	N.D.
Octabromodiphenyl ether	mg/kg	/	N.D.	N.D.	N.D.	N.D.	N.D.	N.D.
Nonabromodiphenyl ether	mg/kg	/	N.D.	N.D.	N.D.	N.D.	N.D.	N.D.
Decabromodiphenyl ether	mg/kg	/	N.D.	N.D.	N.D.	N.D.	N.D.	N.D.
Hexabromocyclododecane (HBCDD)	mg/kg	1000	N.D.	N.D.	N.D.	N.D.	N.D.	N.D.
Bis-(2-ethylhexyl) Phthalate (DEHP)	mg/kg	1000	N.D.	N.D.	N.D.	N.D.	N.D.	N.D.
Benzylbutyl Phthalate (BBP)	mg/kg	1000	N.D.	N.D.	N.D.	N.D.	N.D.	N.D.
Dibutyl Phthalate (DBP)	mg/kg	1000	N.D.	N.D.	N.D.	N.D.	N.D.	N.D.

Shenzhen ATL Testing Technology Co., Ltd.

Address: Floor 1, Xuyuan Vice-building, No. 2107, Bixin Road, Nanlian Community, Longgang Street, Longgang District, Shenzhen City

Tel: (86)-755-26909822 Fax: (86)-0755-61605504 Http:// www.atllab.org



ROHS TEST REPORT
Report No.: ATL20180319162R

Sample Description:

1. Type-c port
2. USB port
3. Wire
4. White plastic
5. PCB
6. Magnet

Notes:

1mg/kg=1ppm = 0.0001%

N.D. = Not Detected (<MDL)

MDL = Method Detection Limit

/=Not Regulated

---=Not Applicable

Shenzhen ATL Testing Technology Co., Ltd.

Address: Floor 1, Xuyuan Vice-building, No. 2107, Bixin Road, Nanlian Community, Longgang Street,
Longgang District, Shenzhen City

Tel: (86)-755-26909822 Fax: (86)-0755-61605504 Http:// www.atllab.org

SAMPLE PHOTO

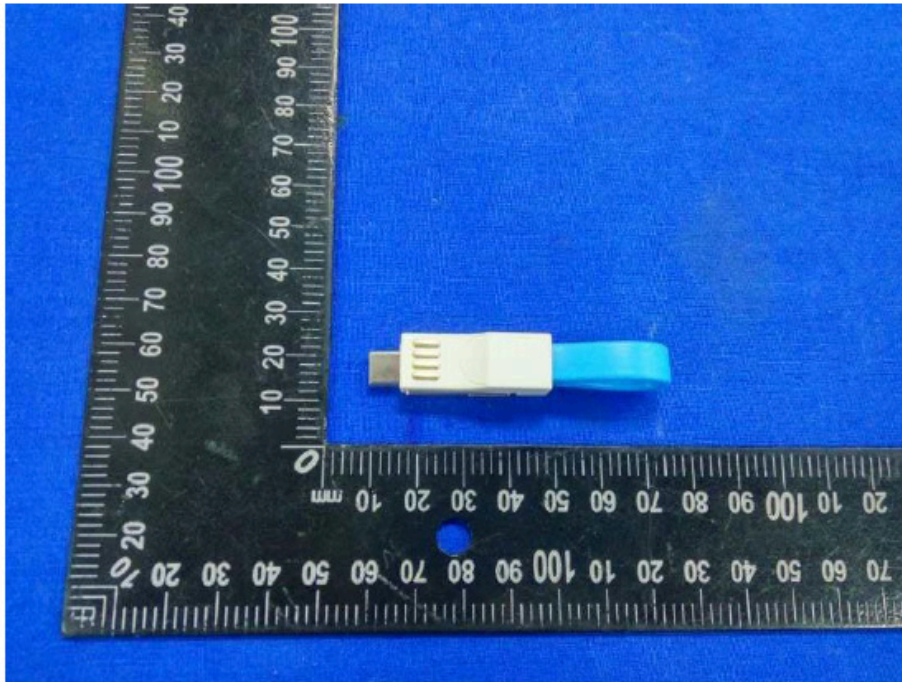


Fig.1

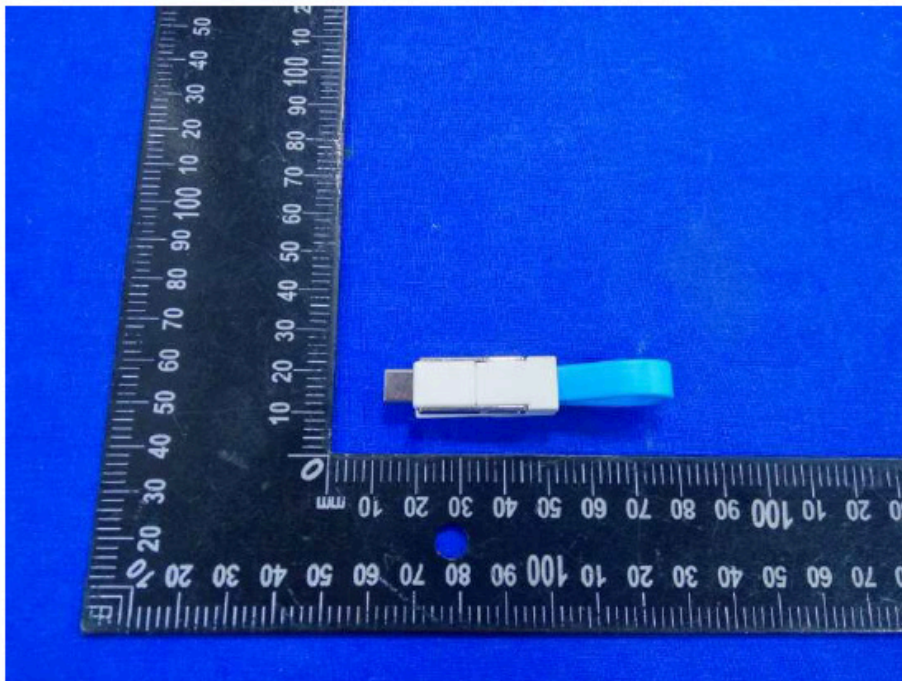


Fig.2

Shenzhen ATL Testing Technology Co., Ltd.

Address: Floor 1, Xuyuan Vice-building, No. 2107, Bixin Road, Nanlian Community, Longgang Street, Longgang District, Shenzhen City

Tel: (86)-755-26909822 Fax: (86)-0755-61605504 Http:// www.atllab.org

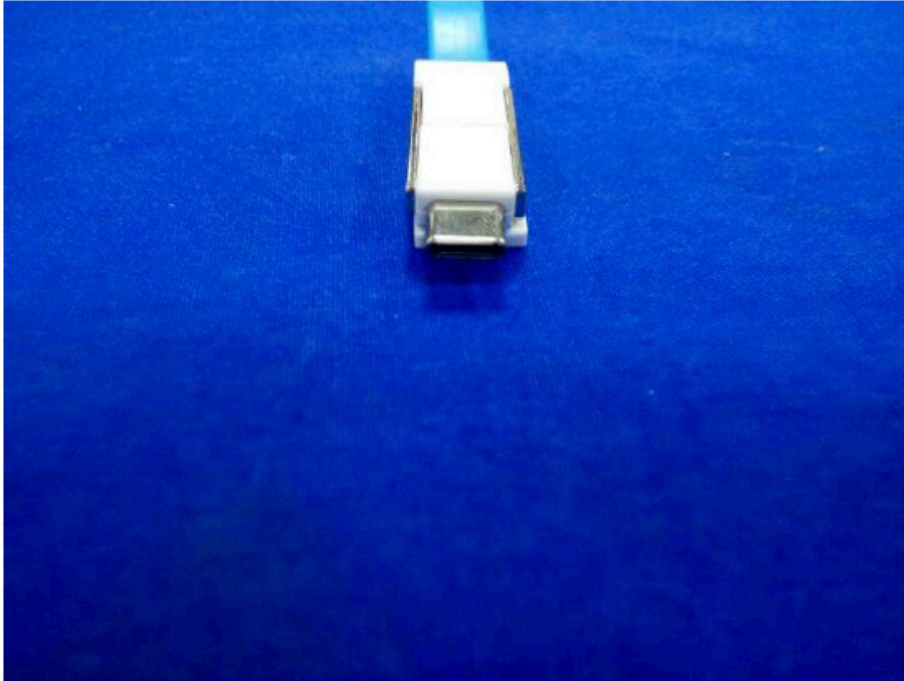


Fig.3



Fig.4

Shenzhen ATL Testing Technology Co., Ltd.

Address: Floor 1, Xuyuan Vice-building, No. 2107, Bixin Road, Nanlian Community, Longgang Street, Longgang District, Shenzhen City

Tel: (86)-755-26909822 Fax: (86)-0755-61605504 Http:// www.atllab.org

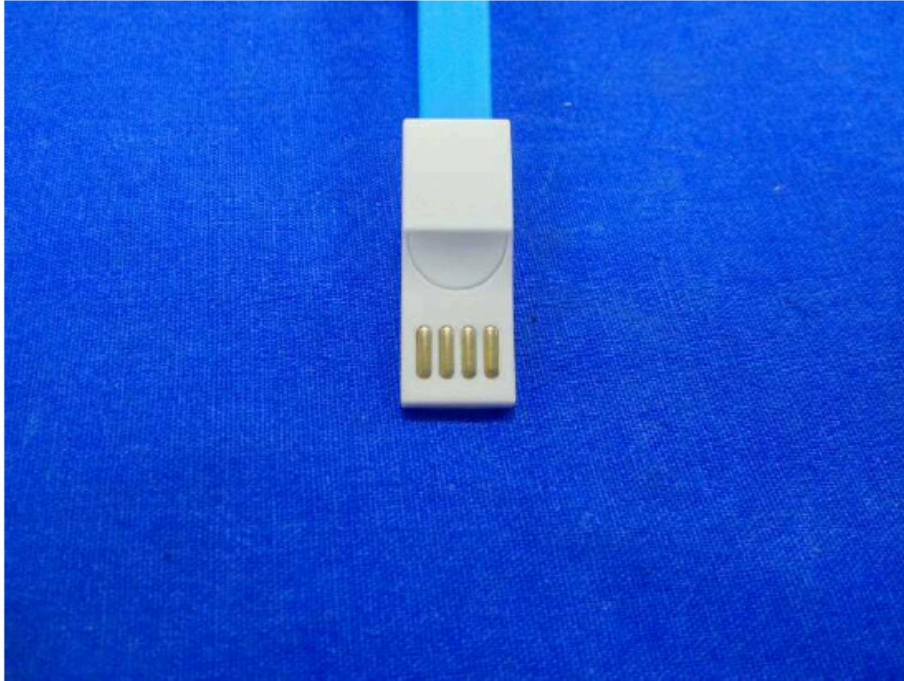


Fig.5

****End of Report****